



DICK

Traditionsmarke der Profis

TRACEABILITY, ALLOCATION, KNIFE CODING



- Pioneering for hygiene and safety
- Complete traceability and allocation to individuals and departments
- Durable and corrosion-resistant marking
- Process optimisation

Knives . Tools . Sharpening Steels . Grinding Machines

www.rfidick.com

YOU WILL PERFORM BETTER WITH THE **RFID SYSTEM**

Who works where, with which tool? Does the employee have the necessary authorisation? Has the tool collection and return been booked? Does the tool management process work efficiently? Key questions asked in every place that works with sensitive, valuable tools.

Friedr. Dick has the answer to these - with the RFID system. The complete system of hardware, software and RFID tools provides immediate and fully automatic tracing of tools used, as well as providing documentation under quality guidelines.

✓ **GREATER SAFETY**

Costly downtime caused by damaged or lost tools is reduced. Employees' awareness levels are raised.

✓ **FEWER THEFTS**

Each knife and tool can be uniquely identified, traced and allocated to its current owner.

✓ **QUALITY MANAGEMENT WELCOMES THIS AS WELL**

With the RFID system, you can easily meet the requirements of the International Featured Standard (IFS) and qualify these at customer audits.

✓ **ANOTHER PLUS POINT**

A modular system that adapts flexibly to your spatial conditions as well as your individual requirements.

✓ **COST REDUCTION**

A decrease in machine damage and batch contamination.

✓ **A BETTER OVERVIEW**

Accurate cost analysis through simple evaluation of the data and the individual knife use.



THE **SOFTWARE**

The T³ TOOL + TRACK + TRACE software can be used to analyse tool management data. It will give you a good overview of the individual use of tools, and create a basis for precise cost analysis.



The T³ TOOL + TRACK + TRACE software is a network-compatible software, and can be connected to an ERP system or your company network in a variety of ways. The software consists of:



Tool management



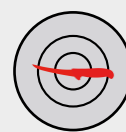
Personnel master data



Article master data



Evaluations and analyses



Tool analysis